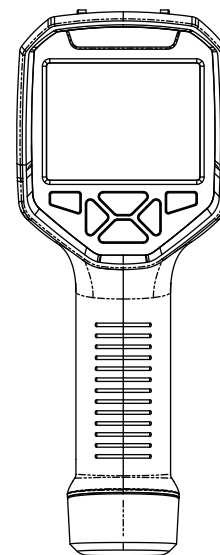




Thermal Imaging Camera Instruction Manual



Dongguan Xintai Instrument Co.,Ltd.

① Add: Building 16, No.3, Yongtai Road, TangxiaTown, Dongguan
City,Guangdong,China

Postal Code: 523710

📞 Tel: +86-769-82612006

📠 Fax: +86-769-82612005

🌐 Website: www.hti-meter.com

www.hytechcn.com.cn www.xintest.en.alibaba.com

User Manual Version 1.1. April 11, 2024.

HT-H38

Contents

Preface	1
Limited Warranty and Limited Responsibility	1
Safety Instruction	3
Preliminary Acquaintance with Infrared Thermal Imager	8
Overview	9
Cleaning of the Products	10
Lens Maintenance	10
Charging of the Battery and Description	11
Performance Index	13
Product Structure	15
1. Structure Introduction	15
2. Description of Display Content	17
3. Key Description	18
Operating Instructions	19
Set the Menu	22
Image and Video Introduction	25
1. Image Capture	25
2. View Image	25
3. Delete Image	26
4. Recording	26
5. View Video	26
6. Delete Video	26
7. Read Images	27

Image Coincidence	28
1. Description of Image Overlapping	28
2. Application of Image Coincidence	28
Color Palette Description	29
Emissivity	30
1. Emissivity Description	30
2. Emissivity Setting	31
3. The Emissivity Value of Common Materials	32
Operation Guide for Thermal Image Analysis Software	33

Preface

Respected users:

How are you! Thank you for purchasing our instrument. In order to use it in a better manner, we remind you to read the instruction for use carefully before use and keep it properly so as to look up in the future use.

Limited Warranty and Limited Responsibility

The company guarantees that the product enjoys warranty service of one year from the purchase date.

But the warranty is not applicable to fuse and disposable battery or the damage caused by improper operation, accidents, negligence, misuse, remodeling, pollution and abnormal condition of the operation environment.

The distributor has no right to provide any warranty in the name of the company.

The company authorizes the retail dealers to provide new products or unused products to final customers but does not authorize them to provide guarantee with wider scope or different contents. Only the products that are purchased through distributors authorized by the company or products that the purchaser paid according to proper international price can enjoy the warranty support of our company.

When the product bought in a country is sent to another country for repair, The company reserves the right to charge the import fees for the parts and components to be repaired or replaced from the purchasers.

When warranty service is repaired, please contact the service center authorized by the company to obtain the authorization information for return. Then post the product together with problem description to the service center with postage and insurance expenses prepaid. Our company will not undertake any responsibility for any damage occurred during the process of transportation. The product will be posted to the purchaser after repair with the transportation expenses paid by the purchasers. If the product failure is verified by negligence, misuse, pollution, change, accidents or improper operation or handling after inspection, including the over voltage failure caused by use without following the rated value stipulated by the product or daily service wear the of the parts, our company will estimate the repair expenses and carry out repair after obtaining the consent of the purchasers. The product will be posted back to the purchaser after repair with the transportation expenses paid by the purchasers. The guarantee is the only compensation that users can be obtained and does not include other express or implied guarantees. The company will not undertake any responsibility for any special, indirect, accidental or subsequent damage or loss, including any data loss caused by any reasons or inference.

Because some countries or states do not allow implied warranties and incidental or consequential damages. Restrictions, so the above limitation of liability and regulations may not apply to every buyer. The users shall make promise that they familiarize with the application field and occasion. The purchase indicates that the users are deemed to know the suitability for the products.

Safety Instruction

Please ensure that you have read and understood the safety precautions described in the following text before using the product so that you can operate it correctly.

The safety precautions described in the following text guides you to operate the product and its accessories correctly and safely to avoid damage and loss to you, other people and the device.

Considerations

Please observe the following guide in order not to damage the product:

Don't assemble or dismantle the product without permission.

The product is a type of super precise equipment. Don't try to dismantle, assemble or remodel any part of the product. Repair of the product should be made by technical personnel designated the company.

Avoid damage to probe of the product

Note: don't put the product close to strong heat source directly (such as electric iron). Otherwise, it may damage the probe of the product.

Product hum

When the product works, there is light sound of clicking every several seconds. This is normal phenomenon that the lens captures images.

Warning

The warning describes the acts that may cause harm to users. Please observe the following operation in order to avoid electric shock or personal injury.

- **If the product case is damaged, don't use it continuously.**

Please contact the local distributors or agents of the company under such condition.

- **During the process of use, if the product is found with smoke, spark and the burnt smell, please stop using at once.**

In case of such condition, the product power supply should be powered off first. After the smoke and peculiar smell disappears completely, please contact the local distributors or agents of the company.

- **Don't weld the battery without permission.**

Such operation may damage the battery and result in leakage and explosion of the battery.

- **Avoid that the battery is impacted (such as collusion and falling, etc).**

Such condition may damage the battery case or result in that the battery leaks or explode.

- **Please pull off the adapter on the power socket when charging is not made.**

The adapter may get overheated if it is connected with power supply for a long time. This may cause overheating, deformation and fire.

- **Please ensure that the plug of the adapter is inserted into the specified power socket.**

The adapter plug may be different due to the regions. Please make confirmation whether the specification of the adapter is consist with the specification of electric appliances in your region. Otherwise, this may cause overheating of the equipment, electric shock, fire, chemical leakage inside the battery, explosion and other serious consequences.

- **When the plug of the adapter or wire is damaged, stop using immediately.**

Don't change the battery unless the plug of the charger is inserted into the socket completely.

- **Do not touch the electric wire with wet hands.**

It is possible to cause electric shock when touching the electric wire with wet hands. When pulling out the electric wire, hold the electric wire head rightly to pull out the wire. Don't pull off the electric wire directly. Otherwise, the electric wire may be broken, causing electric shock and fire.

- **Forbid dip the product into water caught in rain.**

If the case contact with any liquid, please wipe it dry immediately. If water or other liquid enters the inside of the instrument, please power off the power supply at once. Continuous use may result in product damage.

- **Clean the dust on the adapter plug and the data line.**

When it is exposed to dusty and dump environment for a long time, the dirt surrounding the electric equipment will accumulate moisture. This may cause short circuit and fire.

- **Don't use abradant, isopropanol or solvent to clean the enclosure of the device.**

Such operation may cause the product case to be damaged.

- **The product temperature may increase after a long time of charging.**

You may feel scorching heat when the hands touch the sensors.

- **Problem caused by water condensation**

Don't bring the instrument into low temperature environment from high temperature environment in a short time or from low temperature environment to high temperature environment. This may result in that the inside of the instrument and appearance produce water condensation. In such condition, the instrument should be placed into portable box or plastic bag. Before use, make it restore to the environmental temperature and take it out to use. If the product has water condensation inside, please power it off immediately. Otherwise, the instrument may be damaged. Operation is not allowed unless the water condensation disappears.

- **Avoid that the product is impacted (such as collision and falling, etc).**

Such operation may cause the product to be damaged. Please avoid such operation.

- **Long-time storage and regular charging.**

The product should be placed at a cool and dry environment if it not used for a long time. If the product installed with battery is stored for a long time, charging should be made regularly. Otherwise, the battery will run out and the service life will be shortened.

Preliminary Acquaintance with Infrared Thermal Imager

For a long time, infrared thermal imaging detection technology has become an important means to ensure Industrial safety in developed countries. The application field includes electric power, metallurgy, petro-chemistry, machinery, coal, traffic, fire control and national defense, etc. It can not only carries out real-time detection at high voltage, high current and high speed operation to perform real-time detection for production and instrument but also need not power off the power supply, stop the machine or stop the production to find the potential problems and prevent occurrence of malfunction. The "non contact" modern detection technology is safe, reliable and quick. It is a type of technical revolution compared with traditional contact detection method.

The infrared thermal imaging technology is widely used in the following fields:

- Power equipment, transmission, transformer line inspection;
- Hidden fire source search in fire protection;
- Personnel search and rescue in the fire, and fire command;
- Analyze the location and heat loss of leak points in heat pipes and heating equipment;
- Determining the location of the heating fault of the operating train;
- Security department night monitoring.

Overview

This product is an infrared camera that integrates surface temperature measurement and real-time thermal image. The traditional inferred thermometer needs to measure every component one by one while it is not necessary for infrared imaging camera, thus saving time. The potential problems may be displayed on color display screen clearly. Moreover, the central point measurement cursor is used to locate quickly and accurately to measure the temperature of the target object.

In order to increase the differentiation, the product is provided with a visible light camera. The thermal images and visible images are stored in the device and can be read through USB or stored in a computer to generate a report or for print.

With small volume, the product is easy to operate and has strong function. It is the ideal selection for electric power, electronic manufacturing, Industrial inspection and other fields.

The following major functions increase the product's accuracy and usability:

- The radiation coefficient may be adjusted to increase the measurement accuracy of objects with half reflection surface.
- The highest temperature and lowest temperature cursor may guide the users to the areas with highest and lowest temperature of the thermal images.
- The selectable color palette.

Cleaning of the Products

Please use damp cloth or weak soap to clean the enclosure of the device. Don't use abrasant, isopropanol or solvent to clean. The lens and screen should be cleaned with use of cleaning agents for professional optical glasses.

Lens Maintenance

Prevent damage of the infrared lens:

- Clean the infrared lens carefully. The lens is provided with refined anti-reflection coating.
- Don't clean with force to prevent damage of the anti-reflection coating. The selectable color palette.


- Use a cleaning solution for lens maintenance, such as alcohol-based commercial lens cleaners, alcohol, and a lint-free cloth or paper towel. Compressed air tanks can be used to remove loose particles.

Clean the lens:

- The compressed air tank or dry nitrogen ion gun (if applicable) may be used to blow the loose particles on the lens surface.
- Dip the lint free cloth in alcohol.
- Squeeze the excessive alcohol in the cloth or apply the lint free cloth on dry cloth lightly.
- Wipe the lens surface by making circular motion. Then discard the cloth.
- If it is necessary to repeat above step, please use new cloth to dip with the cleaning solution to wipe.

Charging of the Battery and Description

Use USB data line to charge:

- This product has a built-in rechargeable battery.
- When the battery level is low, the top right of the screen will display “”. Please charge in time through USB interface.
- Pull off the USB line after fully charging.

Note: When the battery is completely empty, there will be an abnormality. It is recommended to use the battery when it is sufficient.

To make the lithium ion battery can play the perfect performance:

- Don't place the battery on the charger exceeding 24 hours.
- The thermal imaging device should be charged for two hours at least every three months so as to extend the battery service life to the greatest extent.
- Don't try to charge the battery in extremely cold environment.

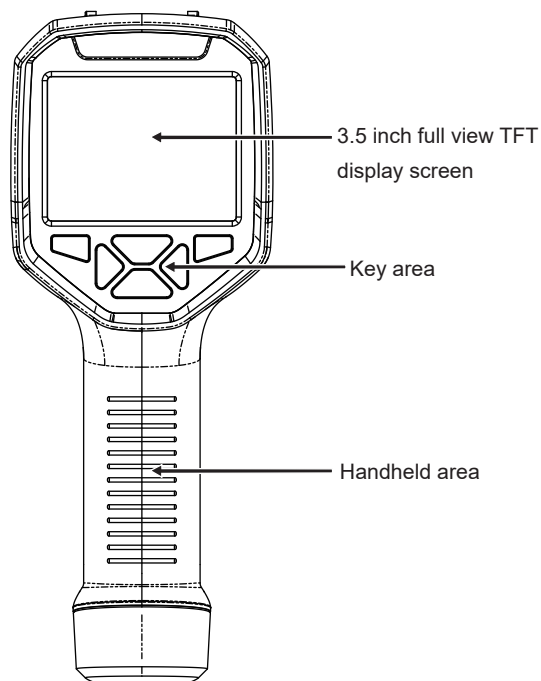
Performance Index

Infrared detector type	Vanadium oxide uncooled infrared focal plane
Infrared resolution ratio	384x288
Infrared response band	8 to 14μm
Pixel size	12μm
NETD	≤50mK @25℃, @F/1.0
Lens focal length	9.1mm
IFOV	1.32mrad
Field angle	29.2°×21.7°
Focusing mode	Manual
Temperature measurement scope	Low range: -20℃ ~ +120℃ (-4℉ to 248℉) ; High range 120℃ ~ +550℃ (248℉ to 1022℉)
Temperature measurement precision	-15℃ to 550℃ ±2℃ or ±2%; -20℃ to -15℃ ±4℃
Temperature measurement resolution ratio	0.1℃
Temperature measurement mode	Center point/cold and hot point tracking
Pallette	Rainbow/ Iron/Cold colour/ White hot/Black hot
Emissivity setting	0.01 to 1.00 adjustable
Thermal imaging frame rate	≤25Hz

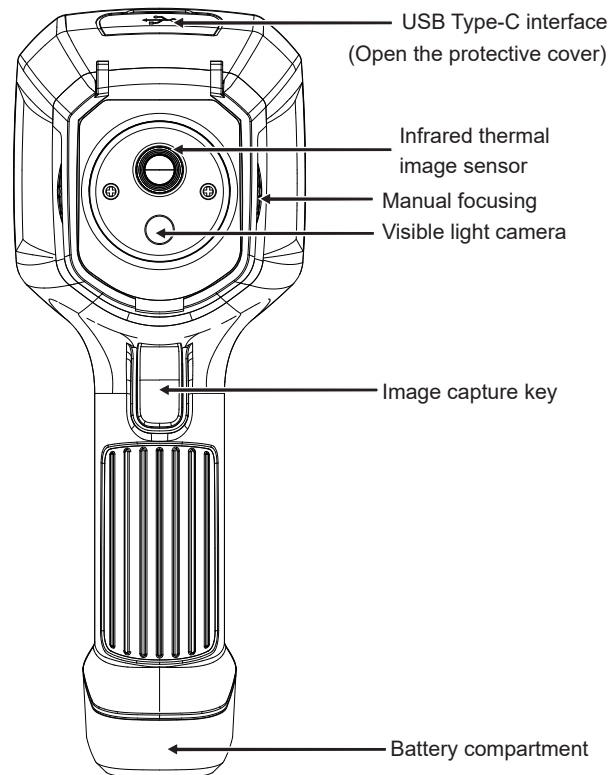
Visible light resolution ratio	640×480
Display screen size	3.5 inches(640×480)
Image display mode	thermal/fusion/picture in picture/ digital camera
Equipment storage	Built-in 16G(The storage space used by the user is about 13.4G)
Format of stored image/ video	JPG/MP4
Export mode of image and video	USB connected with a computer to export
Image analysis function	Support offline analysis of PC end
Menu language	Chinese and English
Battery type	Built-in rechargeable 26650 lithium battery
Battery capacity	5000mAh
Work time	≥4 hours
Power interface	Type-C
Auto shutdown time	5minutes/10minutes/20minutes/ not auto shutdown
Work temperature	-10℃ to +50℃
Storage temperature	-20℃ to +60℃
Relative humidity	10% to 85%RH(Non-condensing)
Product weight	600g
Product size	256mm×95.8mm×128.9mm

Product Structure

1. Structure Introduction

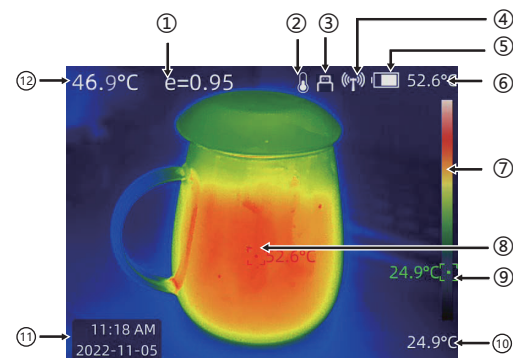


①



②

2. Description of Display Content



The measurement mode of this interface is HiLo spot measurement.

①	Current emissivity	②	Range
③	USB	④	Share
⑤	Battery level	⑥	Maximum temperature
⑦	Color code	⑧	Maximum temperature cursor
⑨	Minimum temperature cursor	⑩	Minimum temperature
⑪	Time	⑬	Central point temperature

Color Code: Used to indicate the color corresponding to the relative temperature from low to high in the field of view.

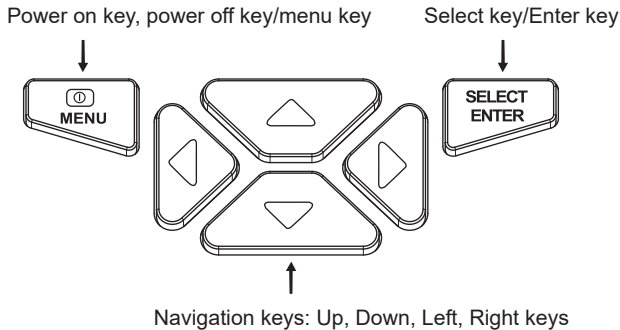
Center Point Temperature Cursor: Used to indicate the center position in the screen area and shown in the Center spot temperature measurement mode.

Maximum Temperature Cursor: Used to indicate the maximum temperature position in the screen area. It will move with the movement of the maximum temperature and shown in the high and low temperature measurement mode.

Minimum Temperature Cursor: Used to indicate the position of the lowest temperature in the screen area, which will move with the movement of the lowest temperature and shown in the high and low temperature measurement mode.

Share: Select Share in the setting wifi options to open sharing.

3. Key Description



Key/state		Press	Hold down
⏻ MENU	Main interface	Menu	Shutdown
	Menu interface	Exit/return	Shutdown
SELECT ENTER	Main interface	——	——
	Menu interface	Enter/confirm	——
▲	Main interface	Menu	——
	Menu interface	Upwards	——
▼	Main interface	——	——
	Menu interface	Downwards, return	——
◀	Main interface	Mode switching	——
	Menu interface	Leftwards, return	——
▶	Main interface	Mode switching	——
	Menu interface	Rightwards, enter	——

Operating Instructions

Power on/off of the product

Hold down “ ⏻/MENU ” key for more than 3 seconds to turn on or off the thermal imager.

Manual Focusing

Rotate the manual focusing button to adjust the focusing to make the image clearer.

LCD Screen Display

After power on, the screen displays the thermal imaging status. (You may need time to adjust when you move the thermal imager between environments with large differences in ambient temperatures.)

Menu Introduction

Press “ ⏻/MENU ” key or “ ▲ ” key to open the menu bar. Press “ ◀ ” and “ ▶ ”key to select submenus: measure, color, measurement parameters, measurement, image mode, and settings.

Press “ ▼ ” to return and “ ⏻/MENU ” to exit.

● Measure, press the “ ▲ ” key to select the Center spot, HiLo spot , and RO(Region of interest). Press the “SELECT/ENTER” key to confirm after selection.

Center spot: The color of the center point cursor is white, and its temperature value is displayed in the upper left corner of the screen.

HiLo spot: The color of the maximum temperature cursor is red, and its temperature value is displayed in the upper right corner of the screen; The minimum temperature cursor is displayed in green, and its temperature value is displayed in the lower right corner of the screen.

ROI(Region of interest): the screen displays the selected area, the highest temperature and lowest temperature in the measurement area.

- Color, press the “ ▲ ” key to select the rainbow, iron , cool color, white hot, black hot palette, select and press the “SELECT/ENTER” key to confirm.

- Measurement parameters, press the “ ▲ ” key to select the object distance(m), atmospheric temperature(℃), relative humidity (%) , reflection temperature (℃) and emissivity, press the “SELECT/ENTER” key to set the parameters, and press the “SELECT/ENTER” key again to confirm after setting.

If the prompt “ Please turn on the temperature correction switch! ” appears, Please find “ Measurement parameters ” in the setting item and enter, and turn on the temperature measurement correction switch (refer to the setting menu for operation and measurement parameter item).

- Measurement, press the “ ▲ ” key to select not Point, Point 1, Point 2, Point 3, select and press the “SELECT/ENTER” key to confirm.

Operation: When one or more measurement points are required, select Point 1 and use the navigation keys (up, down, left, right keys) to move the location of the measurement points. Point 2 and Point 3 are the same as the above operations. After proper

adjustment, press “ ⏹/MENU ” to confirm and return to the main interface.

Cancel measurement point: If not measured is selected after entering the point temperature measurement, all measuring points will be canceled; You can also enter the point temperature measurement to select the measurement point to cancel, and click the “SELECT/ENTER” key to cancel the measurement point.

- Image mode, press the “ ▲ ” key to set the thermal , Fusion, picture in picture, Digital camera and Image registration. Press the “SELECT/ENTER” key to confirm the selected mode. You can also directly press “ ◀ ” and “ ▶ ” keys on the first interface to change the image mode.

Set the Menu

After entering the menu bar, find the setting item, press “ ▲ ” key or “SELECT/ENTER” key to enter the setting option, press “ ▲ ” and “ ▼ ” key to select the option to be set, and then press “ ▶ ” key or “SELECT/ENTER” key to enter the setting. Press “⏹/MENU” to exit.

Temperature Unit: Enter the unit setting list, press “ ▲ ” and “ ▼ ” keys to select Celsius or Fahrenheit, and press “SELECT/ENTER” to confirm.

Temp range: Enter the range switching list, press “ ▲ ” and “ ▼ ” key to select high range or low range, and press “SELECT/ENTER” key to confirm.

Measurement Parameters: Enter the measurement parameter setting, press “ ◀ ” and “ ▶ ” to select the object distance, atmospheric temperature, relative humidity, reflected temperature, emissivity, and temperature correction, press “ ▲ ” and “ ▼ ” key to select the value, and press “SELECT/ENTER” to confirm. When the temperature correction is selected, press the “SELECT/ENTER” key to set on and off of the temperature correction.

Display brightness: Enter the display brightness list, press the “ ▲ ” and “ ▼ ” keys to select low, medium and high, and press the “SELECT/ENTER” key to confirm.

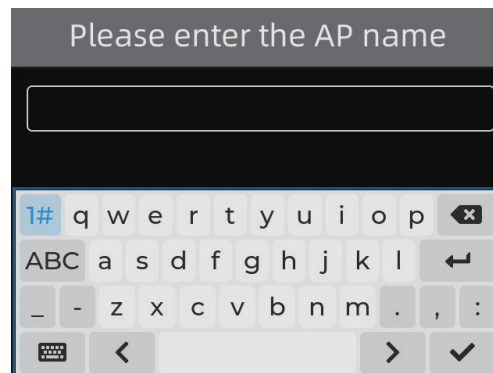
Language: Enter the language setting list, press “ ▲ ” and “ ▼ ” keys to select Chinese and English, and press “SELECT/ENTER” to confirm.

Date and Time: Enter the date and time setting, press “ ◀ ” and “ ▶ ” keys to select the year, month, day, hour, minute and time format, press “ ▲ ” and “ ▼ ” keys to select the value, and press “SELECT/ENTER” key to confirm. Select Time Format and press “SELECT/ENTER” key to set on and off of the time format.

WiFi : Enter the WiFi setting list, press “ ▲ ” “ ▼ ” keys to select to close, share, and press “SELECT/ENTER” key to confirm. Select Share, The default AP name of the product is xhwuAP, and the password is 12345678.

Set Share Name and Password: Select share, press “ ▼ ” key to select share setting and enter; when pressing “SELECT/ENTER” key, then an input box will pop up, use “ ▲ ” “ ▼ ” “ ◀ ” “ ▶ ” keys to enter the AP name. After completing the input, select “√” in the box and press “SELECT/ENTER” key to confirm. Set the password in the same way.

For numerical input, select “1 #” in the key box and press “SELECT/ENTER” to confirm, which will be changed to numerical input. If you need to change to letters, select “ABC” in the key box and press “SELECT/ENTER” to confirm, which will be changed to letter input, as shown in the following figure.



Connect sharing: Search the AP name of this product in the WiFi connection of the electronic device, enter the password (default AP name of this product: xhwuAP, password: 12345678). After connection, enter the website address: 192.168.119.1 in the browser of the electronic device. Click search, and a start or stop pop-up window will appear. You need to check Start to enter.

Auto save: Enter the auto save list, press “ ▲ ” “ ▼ ” keys to select Yes or No, and press “SELECT/ENTER” to confirm.

Automatic shutdown: Enter the automatic shutdown list, press “ ▲ ” and “ ▼ ” keys to select 5 minutes, 10 minutes, 20 minutes, and off, and press “SELECT/ENTER” key to confirm.

Image and Video Introduction

1. Image Capture

Press the image capture key, and when the capture is successful, the screen will display the prompt of "Photo finish", and the image is successfully captured and saved.

2. View Image

Find the picture in the setting options, press “ ▲ ” and “ ▼ ” key to select the image, press “SELECT/ENTER” key to view the

image, and press “ ⏮/MENU ” to exit.

When viewing an image, press the “ ◀ ” key to view the previous image, and press the “ ▶ ” key to view the next image.

3. Delete Image

Select the image to delete in the image list, press “ ◀ ” key, and “whether to delete?” pops up.

Press the “ ◀ ” and “ ▶ ” keys to select “Yes” or “No”, and then press “SELECT/ENTER” to confirm.

4. Recording

Long press the image capture key to start recording, and long press the image capture key again to end recording and save.

5. View Video

Find the video in the setting options, press the “ ▲ ” and “ ▼ ” keys to select the video, and press the “SELECT/ENTER” key to view the video, press the “SELECT/ENTER” key again to pause playing, and press the “ ⏮/MENU ” key to exit.

6. Delete Video

Select the video to delete in the video list, press “ ◀ ” key and “whether to delete?” pops up.

Press the “ ◀ ” “ ▶ ” keys to select “Yes” or “No”, and then press the “SELECT/ENTER” key to confirm.

7. Read Images

Open the USB protective cover as shown in ② . Use USB line to connect the USB port and then computer to read the images or save it into computers. images or save it into computers.

The supported operating system through verification includes: winxp, win7, win 8, win10, Apple system.

It is suggested to use the attached USB line or USB line with higher quality.

Note:





When connecting with a computer, pull off the data line after selecting “pop out device safely” to avoid causing file system damage and other problems. If “unable to save” and other problems occur, you may find the hard disc in the computer and fix it.



Image Coincidence

1. Description of Image Overlapping

Image overlapping makes it easier for users to understand the infrared images by using aligned visible images and infrared images. The use of image overlapping can capture the visible image of every infrared image so as to display the temperature distribution in the target region correctly and share with other people more effectively. problems occur, you may find the hard disc in the computer and fix it.

2. Application of Image Coincidence

Press “/MENU” key or “” key, and the menu bar will appear at the bottom of the screen, and press “” and “” keys to select the image mode.

Press the “” and “” keys to select the image coincidence mode, and then press the “SELECT/ENTER” key to confirm.

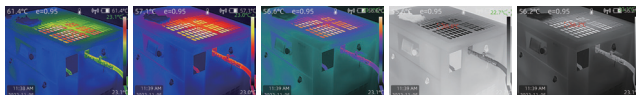
Enter the coincidence mode. When the up, down, left, and right arrows appear on the interface, press the navigation key (up, down, left, and right) to move the visible light image. Press the “SELECT/ENTER” key to switch to the function of zooming in/out the visible light image. Press the up and down keys to zoom out the visible light image. Press the left and right keys to zoom in the visible light image.

Color Palette Description

The palette can be used to change the pseudo-color display of the infrared image on the display. Some tuneSwatches are better suited for specific applications and can be set up as needed. The palette is divided into: rainbow, iron, cool colour, white hot, black hot, five palettes. These palettes work best with high thermal contrast and provide additional color contrast between high and low temperatures.

Suitable selection of color palette displays the details of the target objective better. Rainbow, iron oxide red and cold color palettes focus on display of color. Such color palettes are very suitable for high heat contrast and are used to improve the color contrast between high temperature and low temperature. But the black & white and white & black color palettes provide even linear color.

The following is the image of the same object with selection of different color palettes.



Rainbow

Iron

Cool colour

White hot

Black hot

Emissivity

1.Emissivity Description

The emissivity of the product can be adjusted from 0.01 to 1.00 with the default value of 0.95. Many common objects and materials (such as timber, water, skin and textile fabric) can reflect the heat energy effectively. So it is easy to obtain relatively correct measurement value. The emissivity is usually set as 0.95 when the coarse objects that are easy to give out energy. For semi-matte objects that give out less energy, the emissivity is usually about 0.85 and the emissivity of semi-gloss objects is 0.6. The shiny objects are divided into materials with low radiation coefficient. The emissivity is usually set as 0.3 at the time of measurement. Correct setting of the value of emissivity is very important for you to carry out the most correct temperature measurement. The surface emissivity will produce giant impact on surface temperature measured by the product. Understanding the surface emissivity will enable you to obtain correct temperature measurement result.

2. Emissivity Setting

The product is provided with four types of object measurement modes:

- Coarse object (0.95)
- Semi-matte object (0.85)
- Semi-shiny object (0.60)
- Shiny object (0.30)


According to the characteristics of the measured objects, users may set the emissivity value through the “self-define” option (please refer to the table of “emissivity of common materials”).


3. The emissivity Value of Common Materials

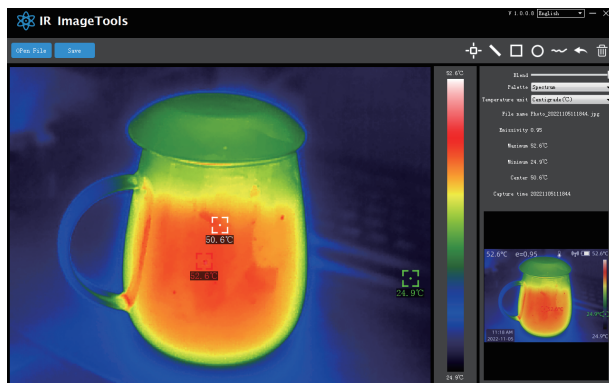
Substance	Thermal radiation	Substance	Thermal radiation
Bitumen	0.90~0.98	Black cloth	0.98
Concrete	0.94	Human skin	0.98
Cement	0.96	Foam	0.75~0.80
Sand	0.90	Charcoal dust	0.96
Earth	0.92~0.96	Paint	0.80~0.95
Water	0.92~0.96	Matte paint	0.97
Ice	0.96~0.98	Black rubber	0.94
Snow	0.83	Plastic	0.85~0.95
Glass	0.90~0.95	Timber	0.90
Ceramics	0.90~0.94	Paper	0.70~0.94
Marble	0.94	Chromium hemitrioxide	0.81
Gypsum	0.80~0.90	Copper oxide	0.78
Mortar	0.89~0.91	Ferric oxide	0.78~0.82
Brick	0.93~0.96	Textile	0.90

Operation Guide for Thermal Image Analysis Software

Software installation and operation

1. Connect the product with USB cable, and then connect the computer. Open the mobile disk in the computer, and find the “INSTALLATION PACKAGE” folder and open it, and click  to install the software.

2. After installation, open  to enter the image analysis software interface, click “Open File”, and select the picture to be analyzed, as shown in the figure:



Software installation and operation

1. Select the language in the upper right corner of the interface.

You can switch between two languages of Chinese, English.

2. The right side displays blend, palette, temperature unit and picture information respectively.

Blend: Move the slider to realize the fusion of visible light image and infrared thermal image. The left end is visible light image, and the right end is infrared thermal image.








Palette: Click the “ ▼ ” icon in the palette to select five palettes: rainbow, iron red, cold color, white hot, black hot.

Temperature unit: Click the “ ▼ ” icon in the temperature unit to select three temperature units: Celsius, Fahrenheit, Kelvin.

Image information: Display file name, emissivity, capture time, maximum temperature, minimum temperature, center point temperature, and original thermal imaging image.

3. “Open” in the upper left corner of the interface opens the thermal imaging image to be read. When you need to save the picture after the operation, click “Save” (Note: the saved picture cannot be opened again with this software after modification).

Icon Introduction

1. “” icon is used to obtain the point temperature of the thermal imaging image.
2. “” icon is used to select the maximum temperature and minimum temperature of thermal image in a straight line.
3. “” icon is used to select the thermal image with a box and take the maximum temperature and minimum temperature.
4. “” icon is used to select the thermal image with a circle and take the maximum temperature and minimum temperature.
5. “” icon is used to select the thermal image with a circle at random and take the maximum temperature and minimum temperature.
6. “” Return icon. When the operation is wrong, you can click this icon to return to the previous operation.
7. “” Deletion icon. When multiple temperature values are selected and need to be canceled, click Delete.